



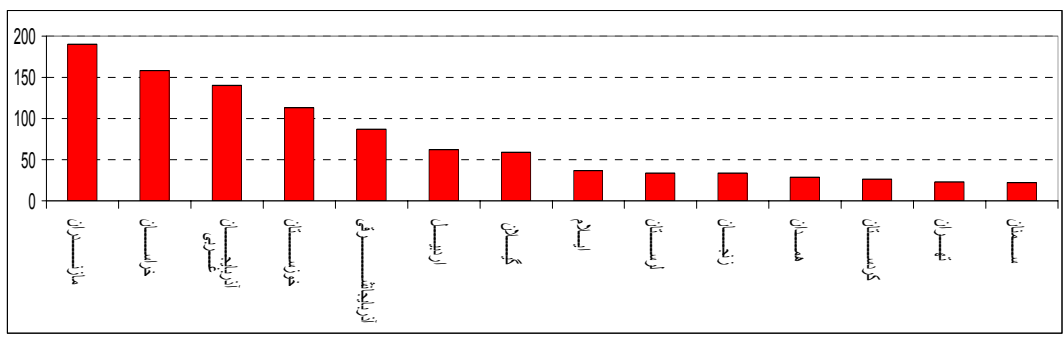
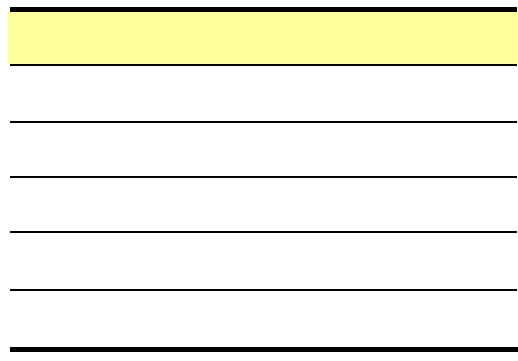
:()

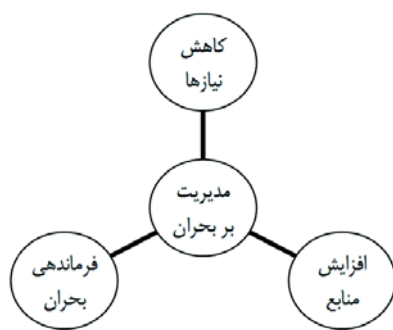
%
% /
%
% /

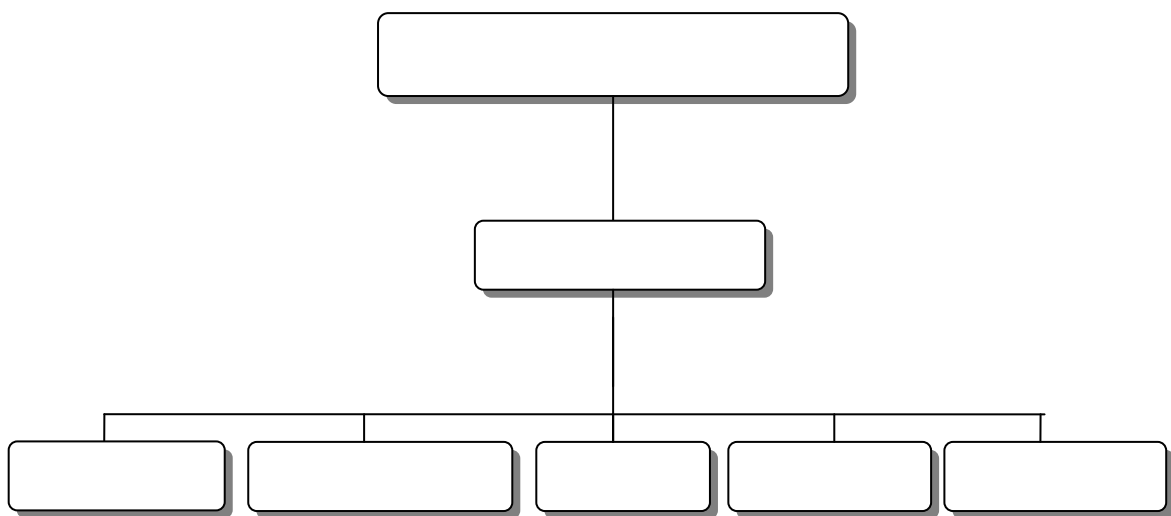
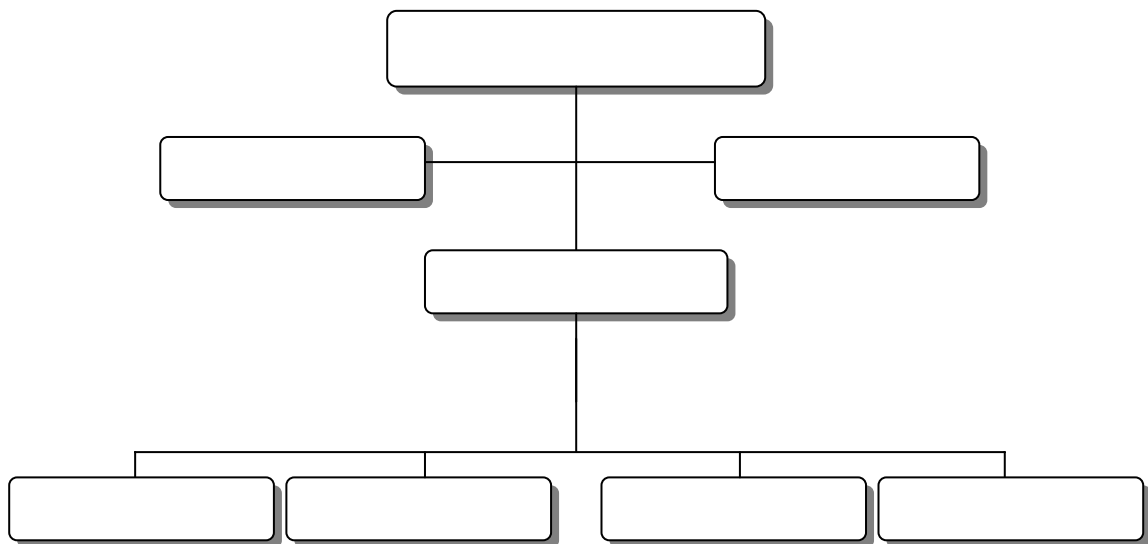
:()

%
%
%
%
%

:(





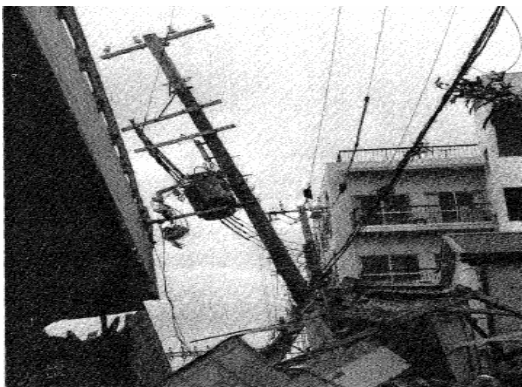




:()



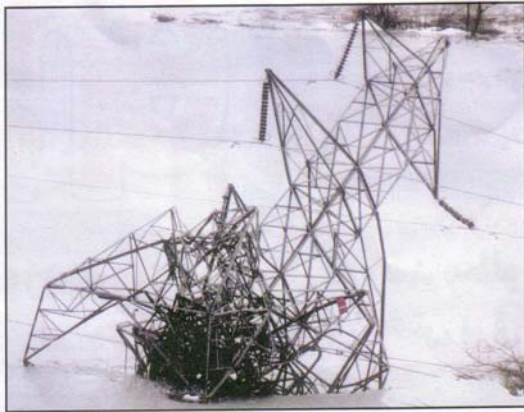
:()



:()



:()



:()



:()

- [1] J.H. GIBBONS, *Physical vulnerability of electric systems to natural disasters and sabotage*, U.S. Government printing office, Washington, DC, June 1990.
- [2] M.Kobayashi, "What we must learn from 1995 the great Kobe-earthquake consideration on the distribution power poles", *IEEE Transmission and Distribution Conference*, pp. 90-95, Sep. 1996.
- [3] G. Parise, L. Martirano, "Electrical power system in buildings with higher risk for seismic event", *39th IEEE Int. Industry Applications Conference*, Vol. 2, pp. 758-762, Oct. 2004.
- [4] J.G. Kappenman, W.A. Radasky, J.L. Gilbert, L.A. Erinmez, "Advanced geomagnetic storm forecasting: a risk management tool for electric power system operations", *IEEE Transactions on Plasma Science*, Vol. 28, No. 6, pp. 2114-2121, Dec. 2000.

" " []

" []

" []

"